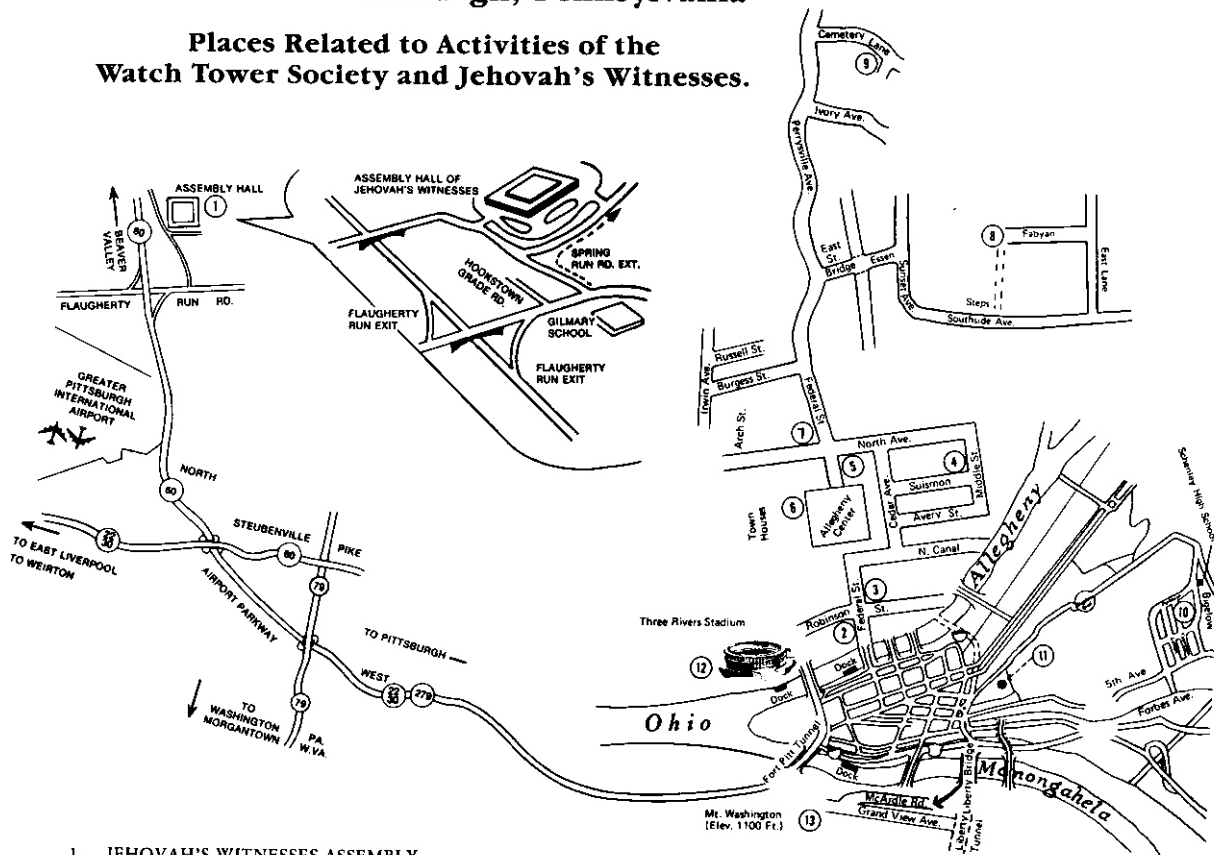


Tour Sheet of Pittsburgh, Pennsylvania

Places Related to Activities of the Watch Tower Society and Jehovah's Witnesses.



1. **JEHOVAH'S WITNESSES ASSEMBLY HALL OF PITTSBURGH**, Located in Coraopolis, Pennsylvania, four miles north of Greater Pittsburgh International Airport. Completed April 10, 1976.
2. **MARTIN BUILDING**, 119 Federal Street. The second floor was used as temporary headquarters for the Watch Tower Society in 1918-19 when the Brooklyn office was closed down.
3. **STORE BUILDING**, 200 Federal Street, formerly numbered according to the side street as 151 Robinson Street. This was the location of the haberdashery store of Joseph L. Russell and Charles T. Russell. It also became the first office of Zion's Watch Tower and Tract Society when it was formed in 1881 and later incorporated in 1884.
4. **WATCHTOWER AUDITORIUM**, corner of Suismon and Middle Streets. Now a Catholic Church. The brothers from the Pittsburgh area met here from 1932 to 1941.
5. **CARNEGIE LIBRARY-MUSIC HALL BUILDING**, formerly addressed on Federal Street and still standing, though

now addressed as located in the North Commons just north of Allegheny Center complex. Outstanding special meetings conducted by Brother Russell were held here.

6. **THE BIBLE HOUSE** was located at 610 Arch Street, Allegheny, now demolished. Headquarters of the Watch Tower Society from 1889 until 1909 when the Society's offices were moved to Brooklyn, New York. The Allegheny congregation met here in the large hall upstairs. This former building was located about in the middle of the present Town Houses that are part of the Allegheny Center complex.
7. **GARDEN THEATRE**, 10 W. North Avenue. Meeting place of the Allegheny congregation and Pittsburgh brothers from 1920 to 1932.
8. **KINGDOM HALL**, 1046 South Side Avenue. New meeting place of the Allegheny congregation, the first congregation of Bible Students (Jehovah's Witnesses) in the United States.

9. **UNITED CEMETERY**. Jehovah's Witnesses do not revere burial places, but some desire to visit the Watch Tower Society's burial plot where C. T. Russell was buried. Turn right off Perryssville Avenue on to Cemetery Lane. The United Cemetery is the last cemetery on this road. A few yards beyond the replica of a pyramid is a driveway that takes one near the Society's plot.
10. **THE WATCH TOWER BUILDING**, 4100 Bigelow Blvd., Pittsburgh. Official address of the Watch Tower Bible and Tract Society of Pennsylvania. The building is also the Central Kingdom Hall where four of the present Pittsburgh congregations regularly meet.
11. **CIVIC ARENA**, downtown. Special annual corporation meetings of the Society were held here in 1967 and 1972.
12. **THREE RIVERS STADIUM** has been used for district conventions.
13. **MT. WASHINGTON**, elevation 1,100 feet. Scenic Point overlooking the greater Pittsburgh area.

CATHERINE S. STROH

1883 — 1967

PASTOR
RUSSELL



CHARLES T. RUSSELL
FEBRUARY 16, 1852
OCTOBER 31, 1916
THE
LAODICEAN
MESSENGER





AT THE GRAVE

On Monday, a party of about 150 was conducted by Brother Bohnet to the grave of Brother Russell. Upon a hillside, sloping towards the south, we joined hands around the grave and sang:

"Blest be the tie that binds
Our hearts in Christian love;
The fellowship of kindred minds
Is like to that above.

"Our glorious hope revives
Our courage every day,
While each with expectation strives
To run the Heavenly way."

One last lingering look upon the scene recalled the peaceful manner of our Pastor's "passing beyond the veil." Brother Rutherford's words came to mind: "I am glad this prison experience was reserved for us, rather than for our dear Brother Russell."

We visited the marble works and there watched the workmen slowly but surely chisel out the monument to be erected as a memorial to the Society.

The Watch Tower Society burial lots in Rosemont United Cemeteries, five miles due north of Pittsburgh City, contain ample grave space for all the members of the Bethel family, and the Pilgrims and their wives—in all more than 275 adult graves. In the exact center of the Bethel lot will be erected diagonally the Pyramid Shape Monument as designed by Brother Bohnet, and accepted by Brother Russell as the most fitting emblem for an enduring monument on the Society's burial space. The size of this structure is nine feet across the base, and its apex stone is exactly seven feet above the ground surface level. It rests upon a concrete foundation five feet deep and heavily reinforced with barbed wire, the work of Brother Bohnet, who would not entrust this important task to anyone else, so we are assured the job was well done. The brother gave a full description of the securing of the rock material (after fruitless attempts extending over a period of about five years) at the time he piloted the conventionists to the cemetery and urged us to help ourselves to souvenir chips in the shop of the granite worker near by.

These monster blocks of pink (Brother Russell's favorite tint) granite were brought all the way from Granite Mountain Quarries, near Marble Falls City in Texas, upon a special flat car, and are said to be about 95 per cent flint rock.

Each slope of the pyramid will face one of the large lots and on each of these slopes is cut in four-inch embossment a Teacher's Bible, on the pages of which will appear the names of the ones buried there. The burial space for Brother Rutherford was indicated and his name, like that of Brother Russell, will be at the top of opposite Bible pages. A Bible space being set apart for the Pilgrims—all in one lot of forty-eight grave space, so all their names will appear on the same Bible.

Above the Bibles are spaces for inscriptions in full, W. T. B. & T. S. I. B. S. A., "Dead with Christ," "Risen with Christ," etc. And above these the Cross and Crown and Wreath, and the whole capped with the apex stone, highly polished—its shape of course being pyramidal.

Within the structure, incased in a block of granite, will be a sealed metal box in which is a complete set of Karatol Scripture Studies, the Memorial Tower, and one of every tract, photographs of Pastor Russell, a copy of the Society's charter, and many other things to interest the people who at some future date may open the pyramid and find them.

Brother Wm. B. Hurst, of Pittsburgh, who was assistant superintendent of the United Cemeteries under Brother Bohnet's general charge, will have the care of Brother Russell's grave in the pilgrimage absence of Brother Bohnet. It is expected the monument will be in place before the next Decoration Day. Any truth people desiring a chip of the stone may send postage enough to carry a piece about the size of an egg, with enough additional to pay the Society for the trouble of having it wrapped for the mail. Best for class members to order collectively.

"Long, long be my heart
With such memories filled,
Like the vase in which roses
Have once been distilled.

"You may break, you may shatter
The vase if you will,
But the scent of the roses
Will cling to it still."

11:00 A. M., Brother A. M. Graham

Thursday, January 2, 1919, Fellowship Day

Subject, "OUR FELLOWSHIP"

OUR program announces that this is "Fellowship Day." In thinking about this matter of Fellowship, we may think of it from a variety of standpoints. Looking back over the past, we notice how God's people have had fellowship.

Away back in the very beginning Abel had fellowship with God because he was in harmony with God's arrangement. He was all alone in this fellowship because there was no one else who could share it with him. Still later on, Noah had fellowship with God because he was in harmony with the Divine arrangement. He had, however, some associates with him who could share the fellowship—his sons and their wives, also his own wife. Thus he had fellowship not only with God; his family shared this fellowship with him.

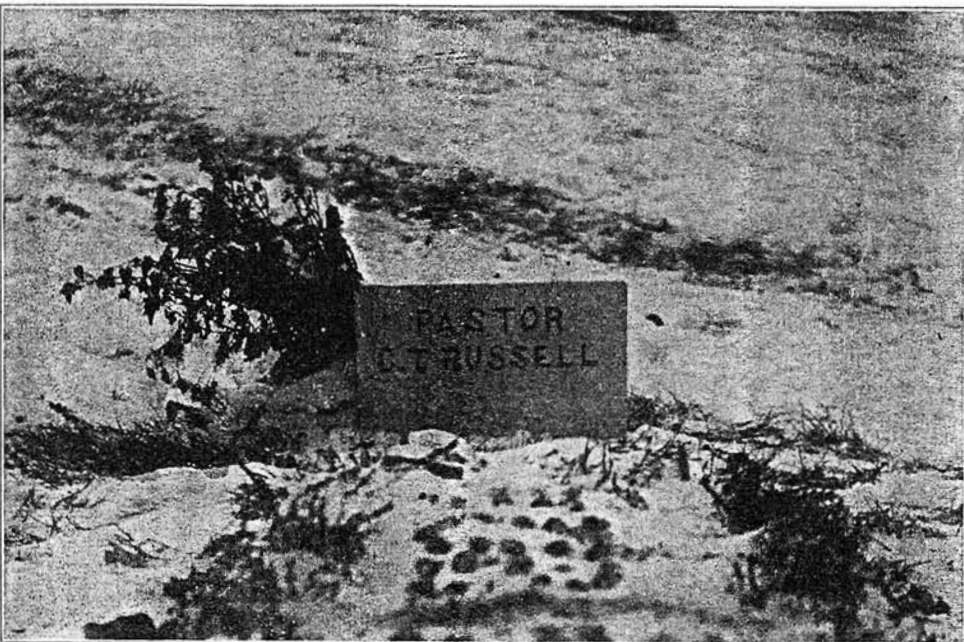
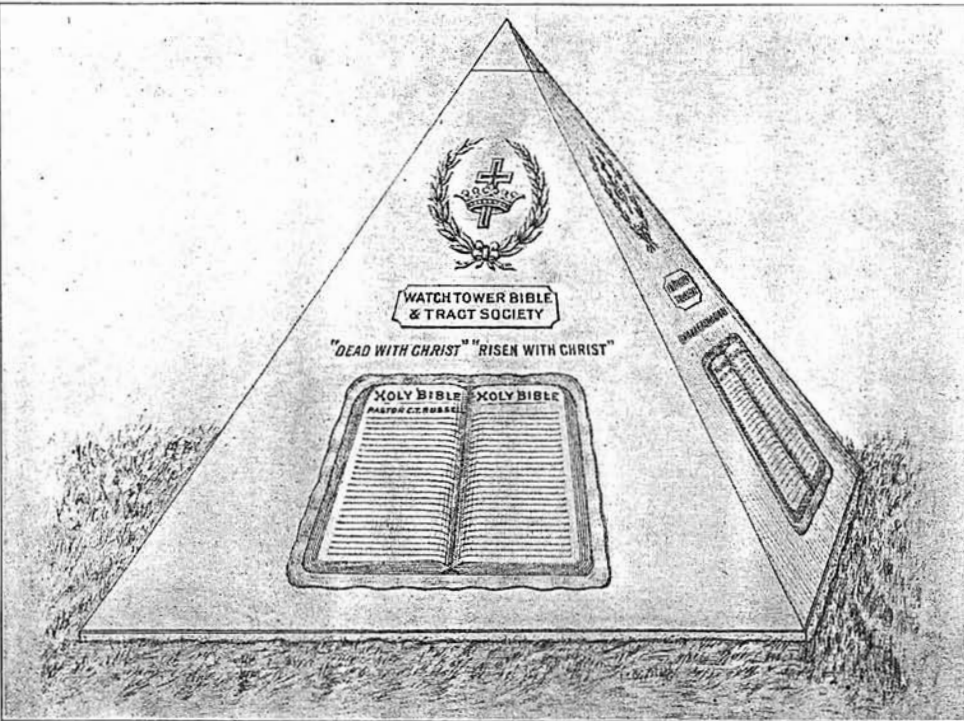
And that is the standpoint we propose to take this morning. We jump way down from Noah's day to our own day—1919—and seek to know and understand what God is now doing; come into harmony with it, and thus have fellowship with one another and with God.

We notice that previous to 1874 we had some fellowship with God and with one another. Some of us had some fellowship while in Babylon perhaps; we had fellowship with one another and with the Lord to the extent

that we were in harmony with the Lord's arrangement as we understood it. In 1874, however, there came a change in the Lord's arrangements, and from that time forward we, who have learned of these changed arrangements, have been having fellowship in a broader and fuller and more complete sense than formerly because we understand the Divine arrangement better, and have come into harmony with it.

We notice, too, some little distinctions in respect to this fellowship which we have had since 1874. When we first came to know about this "present fellowship" we have had with the Father, and with one another, we were talking chiefly about the Plan of the Ages, about the three worlds and their subdivisions, and about what God was purposing to do in these ages and their subdivisions. Later on we studied Tabernacle Shadows, then Chronology, and the Great Pyramid received our careful attention. Yet more recently it was the wonderful events relating to the end of Gentile power in 1914. In all this we observe a progressive fellowship; we had fellowship together in all these things.

Since October, 1914, we have been watching the trend of events in the world with increasing interest, and we have been having fellowship along other lines. We do



The WATCH TOWER

AND HERALD OF CHRIST'S PRESENCE

VOL. XLII

DECEMBER 15, 1921

No. 24

ANNUAL REPORT 1921

UNDER the terms of the charter and by-laws of the Watch Tower Bible & Tract Society, the annual meeting was held at Pittsburgh on Monday, October 31, 1921.

A three-day convention preceded the annual meeting, being held at Memorial Hall. Brother Macmillan was the chairman of the convention, which was addressed by the chairman and several other brethren, amongst them Brothers Wise, Van Amburgh, Kendall and Rutherford. Sunday afternoon a public address was delivered at the Syria Mosque by the President of the Society, at which the attendance numbered approximately three thousand. Splendid attention was given and we hope much good was done.

Monday the thirty-first being the anniversary of Brother Russell's change to glory, the friends assembled in the afternoon at the cemetery, where memorial services were held, being made brief, however, on account of the inclemency of the weather. A little souvenir of the plot of ground and the pyramid stone marker had been provided, which was distributed amongst those in attendance. While brief, the ceremony was sweet and brought many memories of the past and the faithful service of our beloved Pastor. While all missed him, all rejoiced that he had passed to his everlasting reward, being forever with the Lord.

Withal the convention was a very blessed one and when the hour came for returning to the respective places of abode, each heart responded with thankfulness to the Lord that he had graciously permitted our assembling together for fellowship and encouragement.

Monday morning the thirty-first, at ten o'clock, the annual meeting was convened, with Brother Rutherford, the President, in the chair. After the usual devotional services the order of business was taken up. The first order of business after considering the minutes being the reports, both the President and the Secretary made reports of the activities of the Society during the past year. On motion of Brother Hayes, of Washington, the reports were received and those present by unanimous vote expressed a deep appreciation of the management of the work under the Lord's supervision and the blessings that had attended it during the past year.

PRESIDENT'S REPORT

Brother Rutherford made rather an exhaustive re-

port, the substance of which we set out here, as follows:

As President and General Manager of the Watch Tower Bible & Tract Society it is my privilege and pleasure to make report to those holding voting shares assembled at the annual meeting.

Believing that the King's business requires the best possible service, it has been the policy of the management to put the work of the Society on an efficiency basis. To this end the work at headquarters has been organized, and likewise the work at the various branch offices has been arranged. All the dear brethren at headquarters appreciate the fact that it is a privilege and not a right to be there, and that the privilege of engaging in the Lord's service at this time is second to none granted to any one on earth. And being all devoted to the Lord and his cause, they recognize it is a great privilege to cooperate in the work with others in making known the message of the kingdom.

As a great orchestra renders harmonious music only when each player attends strictly to his instrument or part of the business, even so the Lord's work yields harmonious results when each one remains at his post and performs with his might what his hands find to do. We strive to learn the lesson, "Study to be quiet and do your own business". With these practical methods directed always by the holy spirit, every one manifesting the holy spirit finds the work joyful and beneficial.

OFFICE ROOM

Since the re-establishment of the Bethel the executive offices; editorial rooms, correspondence department, etc., have been at Bethel. The space there, however, has been inadequate to accommodate the workers required to meet the increased demands. Hence it has been necessary for us to lease a building at 35 Myrtle Avenue, Brooklyn, some eight blocks from the Bethel Home, at which place we have installed most of our printing machinery.

In all there are laboring at Bethel 107 persons. Every one at headquarters works. For this reason it is known as a workhouse and not a place to idle away time. All the available space in the Bethel Home is occupied either as offices or as sleeping rooms, only that we reserve two rooms for guests who visit us from time to time.



ANNUAL
MEETING

1921



PROGRAM
FOR I. B. S. A.
CONVENTION
PITTSBURGH
OCT. 28-31, 1921

The Pyramid monument erected at the grave of Brother Russell was sketched by Brother J. A. Bohnet and approved by Brother Russell several years ago. It was his desire that such a monument should be erected on this lot and he set about to procure the materials before his death.

After Brother Russell's death, Brother Rutherford, learning that Brother Russell had ordered the erection of this monument, asked Brother Bohnet to proceed at once to get the material and let the contract for its construction and erection.

The monument is erected on the Bethel Family burial lot in the Rosemont-Mount-Hope-Evergreen United Cemeteries, situated five miles north of Pittsburgh. The material is pink granite. It is in pyramid form, resting upon a base 9 feet square and set in reinforced concrete. The apex of the pyramid is 7 feet from the

victory and great reward. The capstone, itself a perfect pyramid, is patterned after the capstone of the Great Pyramid of Egypt, symbolic of the Christ.

When this monument was erected there was placed within copies of all the Society's records, books, tracts, and booklets written by Brother Russell, with several of his photographs and other mementos which may be of interest to the people in the ages to come.

The burial lot here is sufficient for 246 graves. It is situated on a sloping hillside, and the grave of Brother Russell is set at such a point that none can be placed above his; therefore his has the place of honor. There is also erected a headstone at the grave of Brother Russell of dark Barre granite, about 4 feet in height, upon which is cut the following inscription:

CHARLES T. RUSSELL

FEBRUARY 16, 1852

dark Barre granite, about 4 feet in height, upon which is cut the following inscription:

CHARLES T. RUSSELL

FEBRUARY 16, 1852

OCTOBER 31, 1910

THE

LAODICEAN

MESSENGER

At the top of the face of this stone appears a portrait of Brother Russell made on imperishable porcelain; it is impervious to heat and cold and will last even longer than the granite. Above this, carved in raised letters, are the words "PASTOR RUSSELL".

It has been the custom of the friends to assemble on the 31st of October each year to commemorate the death of Brother Russell. It was thought that the friends would be pleased to have this little souvenir as a memento of his last resting place.





WATCH TOWER PEOPLE
AND TRACTS QUERIES





RISEN WITH
CHRIST

STANLEY
MAY 18 1880
MAY 18 1900



WATCHTOWER BIBLE
AND TRACT SOCIETY



DEAD WITH
CHRIST

BIBLE



IESA

HOLY

BIBLE



RISEN WITH
CHRIST

HOLY & BIBLE